



# 2011 Parent Survey

## Summary of Results

### Points to note

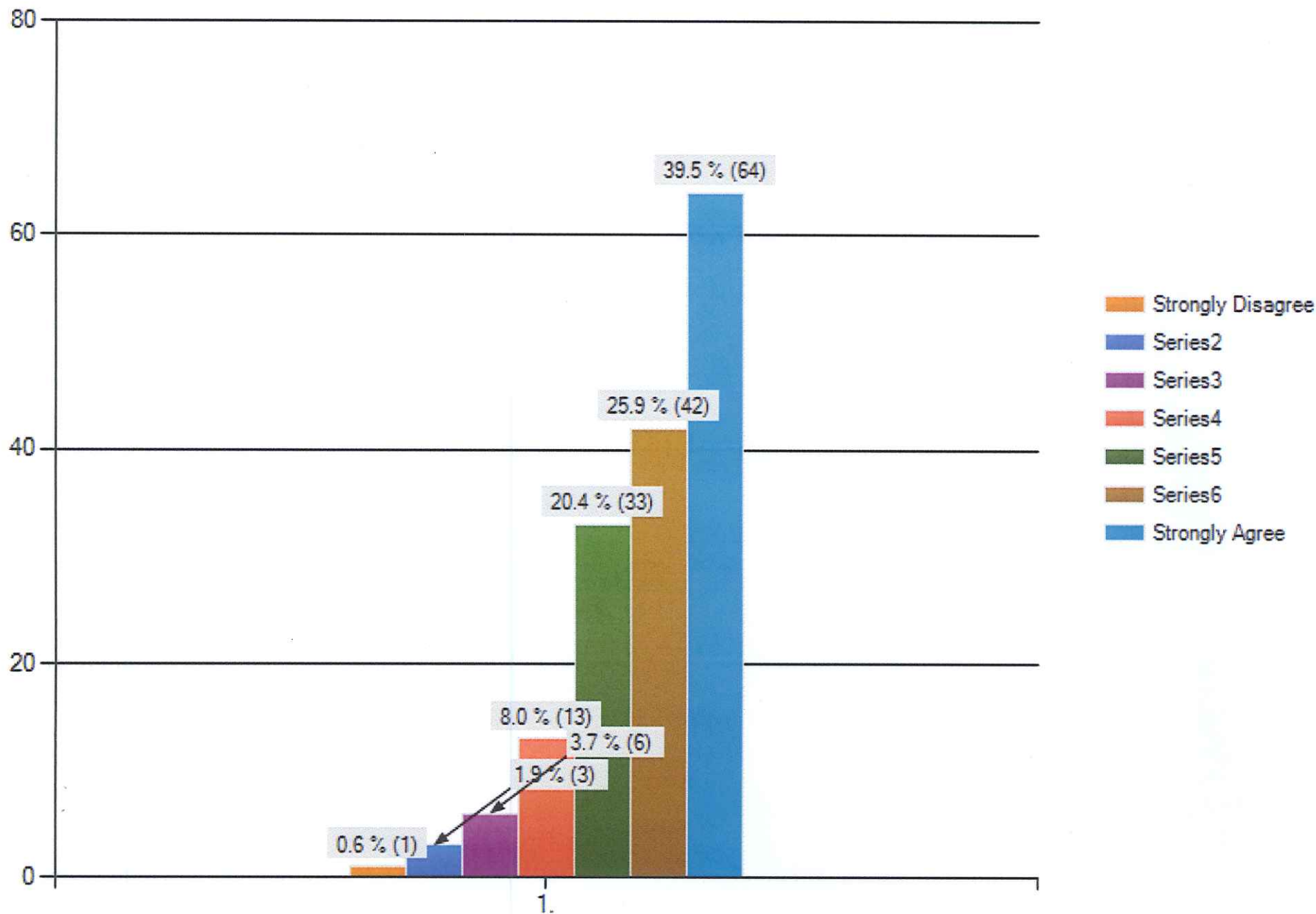
- A total of 162 family returns out of 461 families in the school
- Not every question was answered by respondents
- Comments have been grouped and will be analysed by the Board as part of the self-review process for 2011. They have not been included in this summary due to a lack of space.
- The figures in the graphs show percentages and actual numbers of respondents.

Thank you for taking the time to respond to this survey. The feedback you give is valuable for the Board as we continually review what we are doing at Hukanui. The Board will use this feedback, along with feedback from students and staff as part of our strategic review and planning for the coming year.

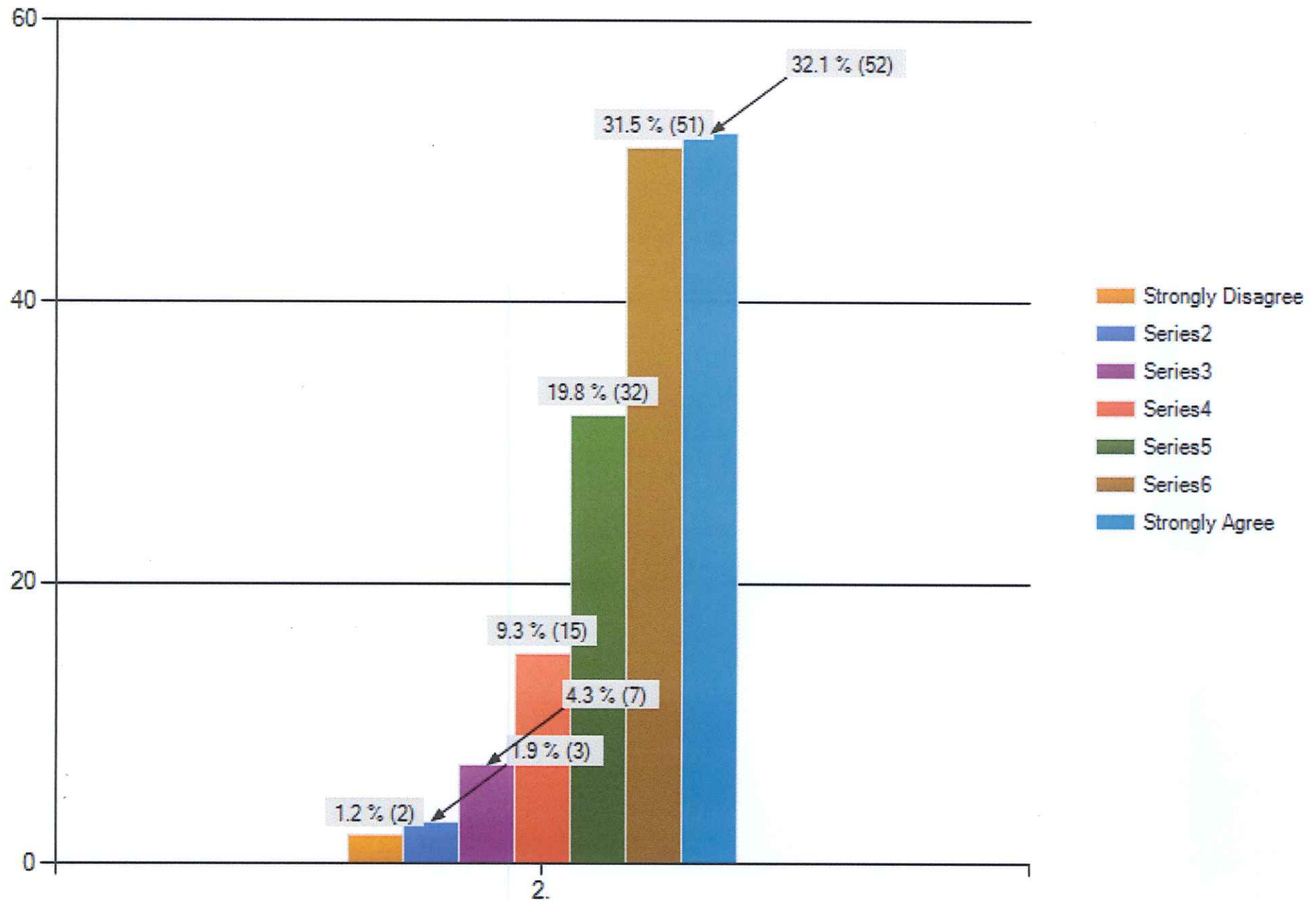
Regards

Raewyn Shackleton  
Chairperson  
Hukanui School Board of Trustees

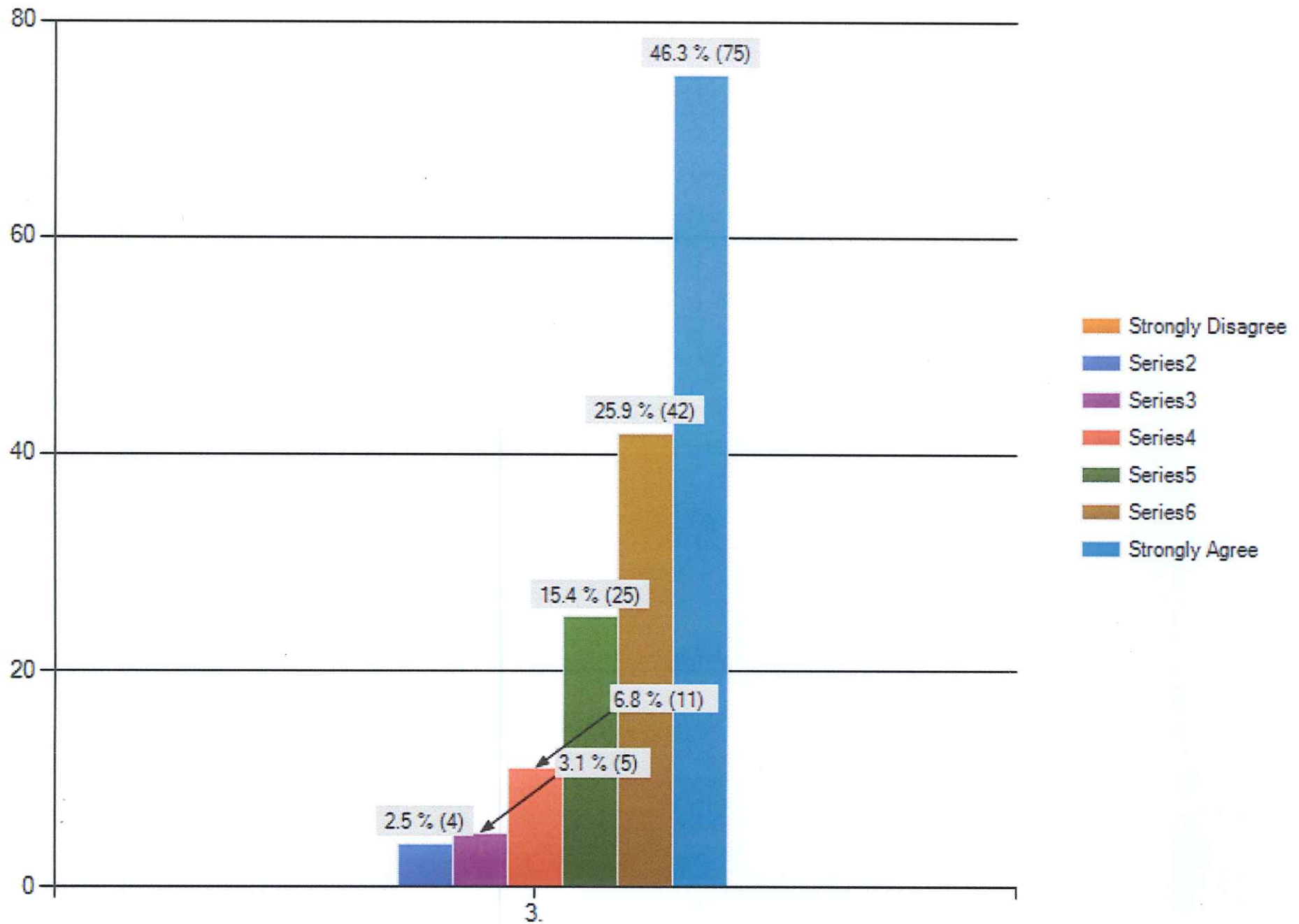
**My child's progress against national expectations is clearly explained through learning conferences and written reports.**



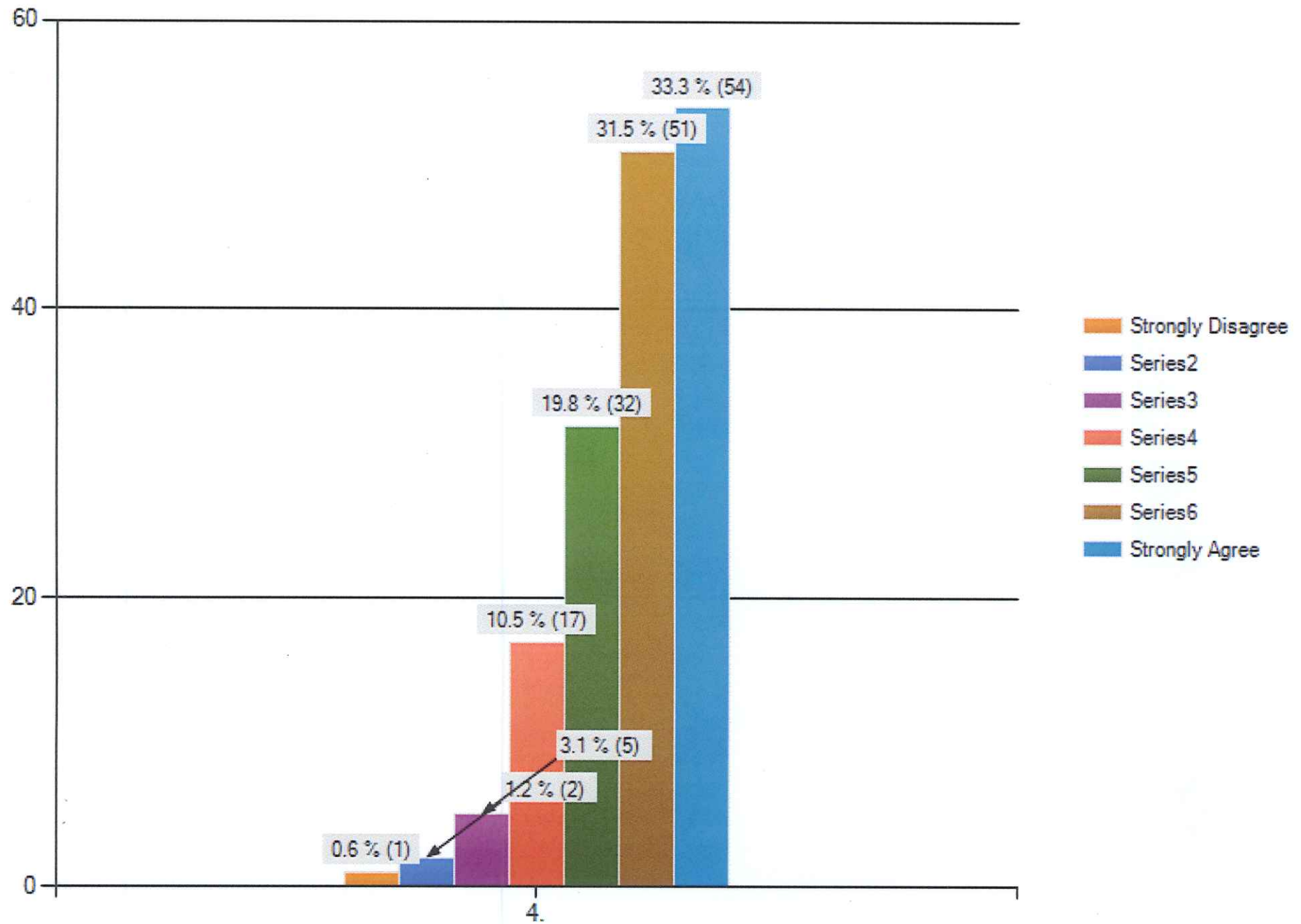
# I am happy with my child's / children's learning progress so far this year



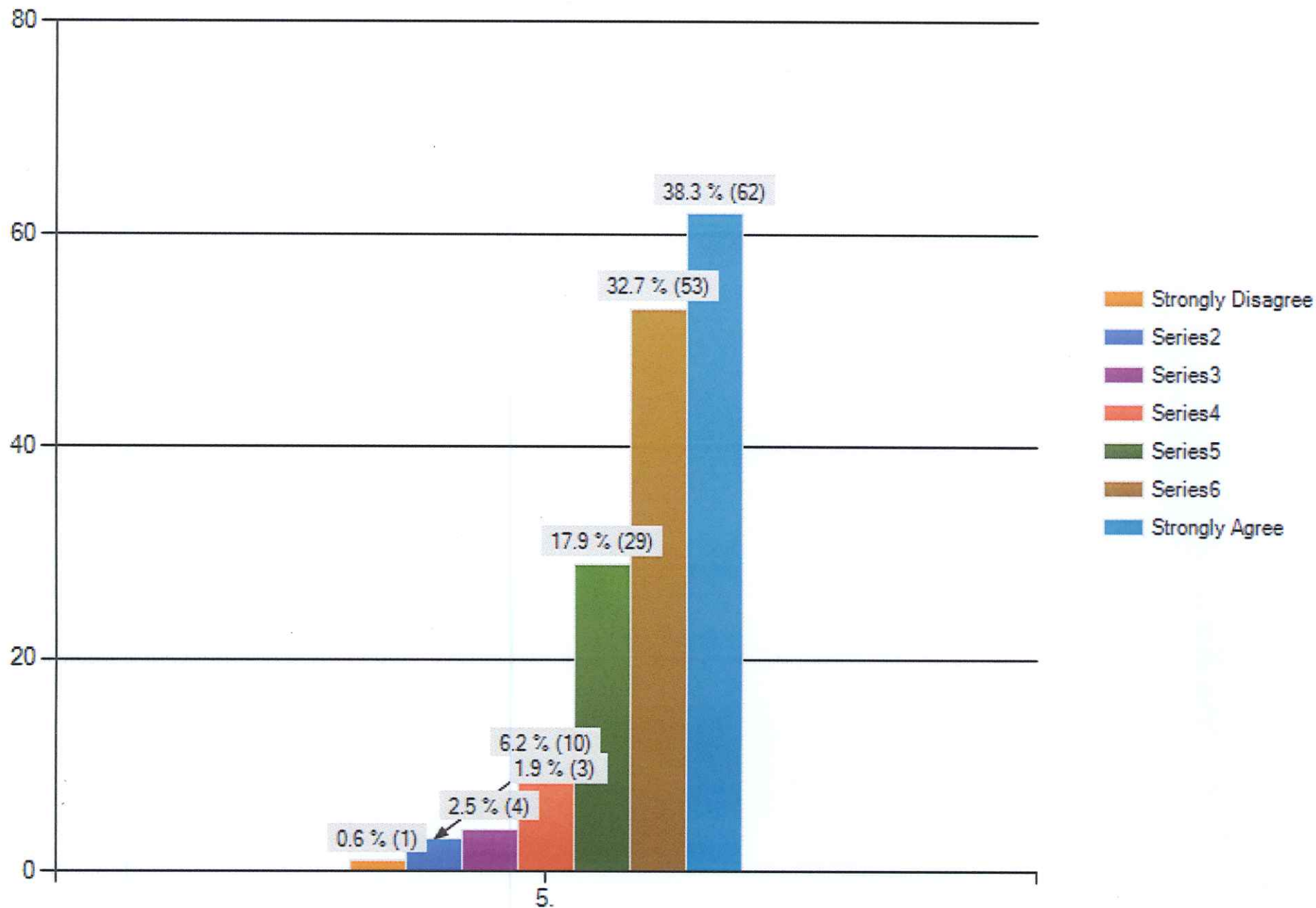
# I have found the school staff to be very approachable



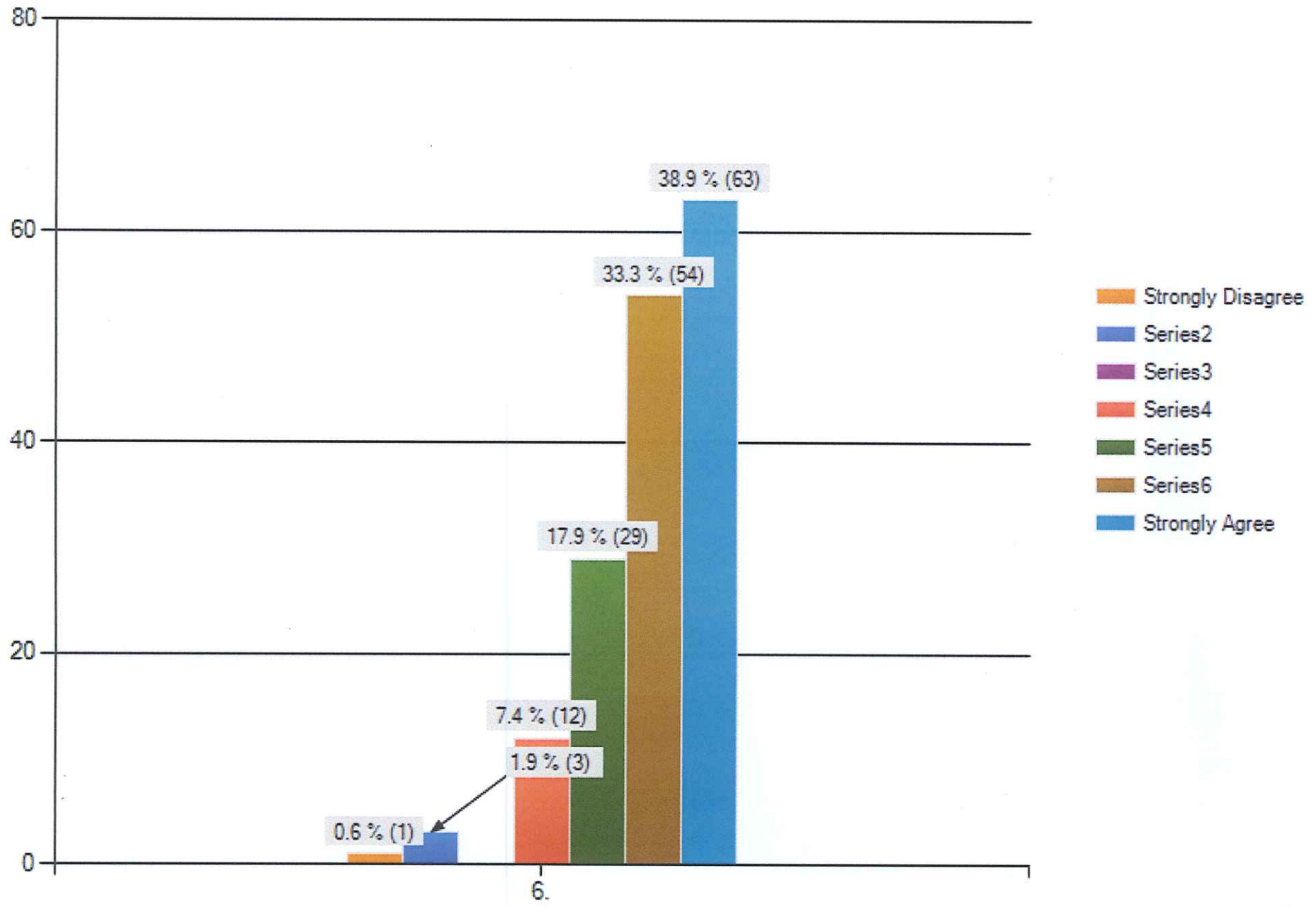
# I am kept well informed of what is happening in the school



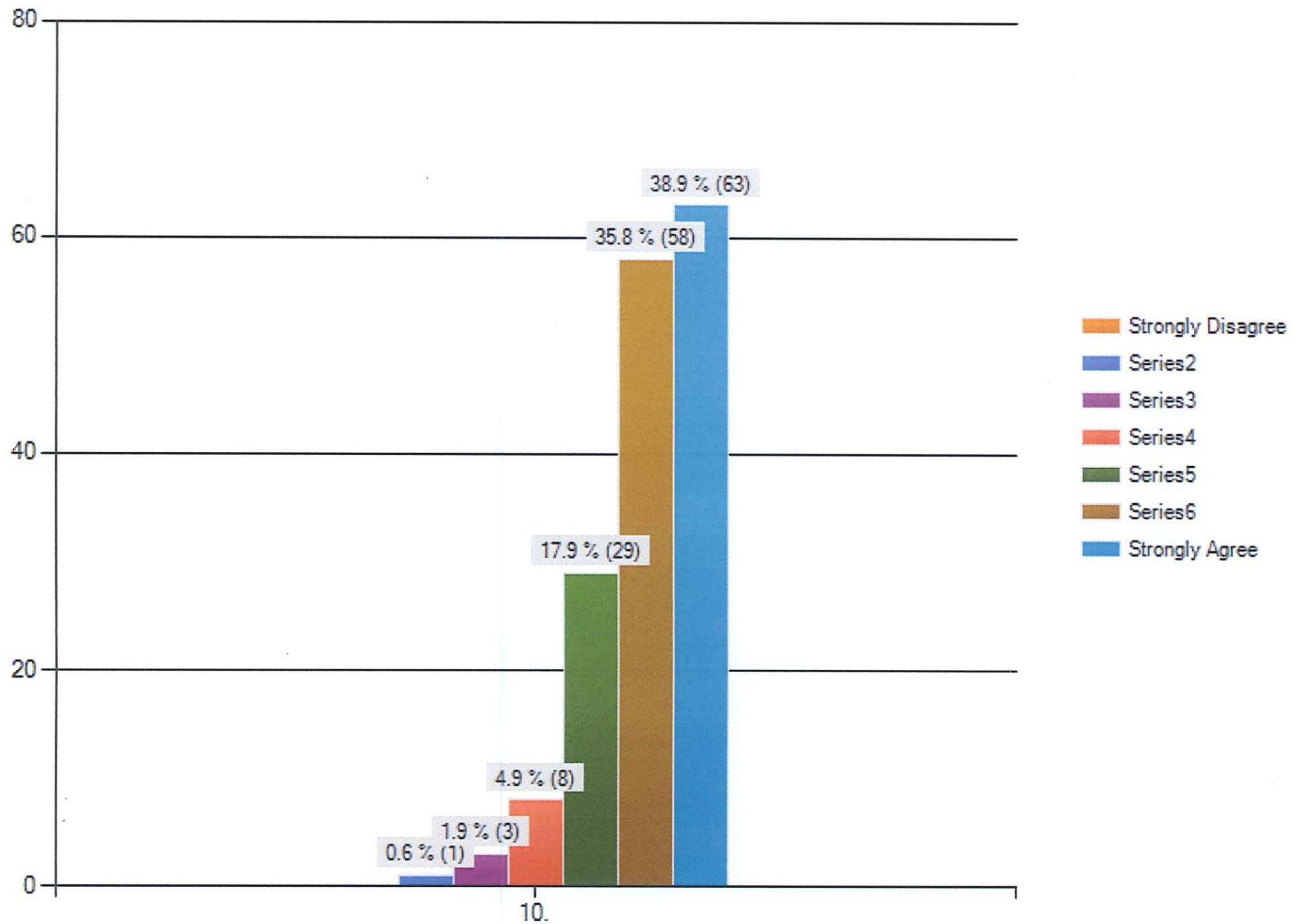
I feel welcomed in the school and am given opportunities to be involved in class and school activities.



**The school provides a wide range of learning opportunities for children to develop individual interests and talents.**



# Overall the school is meeting my expectations



### What area would you like the 2012 parent curriculum evening to cover?

